



Volume 8, Number 3

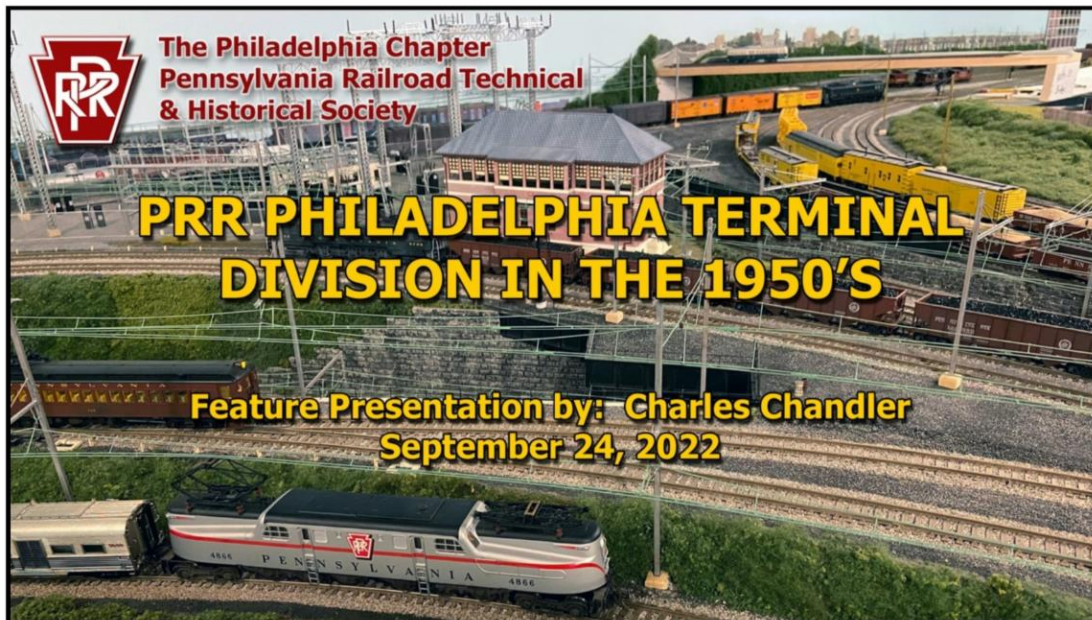
March 2024

The NMRA's *Turntable* is a monthly publication that, like a railroad turntable, will lead you in several directions on the internet.

This e-publication is a collection of railroad and model railroad videos, podcasts, websites, and/or other information freely available on the internet that we think may be of interest to you. The NMRA claims no ownership of this information, nor do we endorse its creators or their websites. The *NMRA Turntable* will not promote individuals or their for-profit ventures.

Having trouble seeing this email? [View as Webpage](#)

PRR Philadelphia Terminal Division



[PRR Philadelphia Terminal Division](#)

This presentation was given by Charles Chandler at the Philadelphia Chapter on September 24, 2022. Charles shared numerous images and stories of constructing his 1950's era prototype layout of the PRR Terminal Division.

Please note this presentation is a recording of a projected presentation. As such, lighting, viewing angle and audio are not

ideal. However, the photos and accompanying narration should provide an interesting watch.

Assembling a DCC-EX Command Station



Overview

DCC++ EX is an easy and affordable DIY DCC Command Station and related products for running an entire model railroad layout from locomotives to accessories. DCC++ EX software is free and open source and runs on low cost and easily available Arduino (and other) microcontroller hardware.



DCC++ EX (aka CommandStation-EX) is the flagship product from DCC-EX, a company created early in 2020 to address the need for an easy-to-use, easy to assemble, and inexpensive controller for model railroads. Inspired by the original DCC+, the work of Gregg E. Barman in 2014, DCC-EX took the base concept and set of commands, completely re-wrote the software from the ground up, and added many new features and enhancements.

A full system can be as simple as taking 2 boards that can be purchased for under \$30, snapping them together, connecting 2 wires to the track, and operating the layout from a computer, Raspberry Pi, or phone connected with a USB cable or wireless network connection.

Components

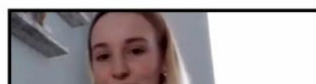
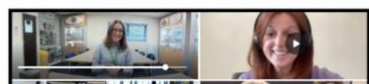
Currently, the project has the following Components:



Assembling a DCC-EX Command Station

In this video, you'll see how to assemble the basic hardware for a DCC-EX command station to control trains using an Arduino Mega microcontroller. In the [next video](#) you'll see how to download and install the free DCC-EX software and add some upgrades to the system.

Women in the Model Railway Hobby

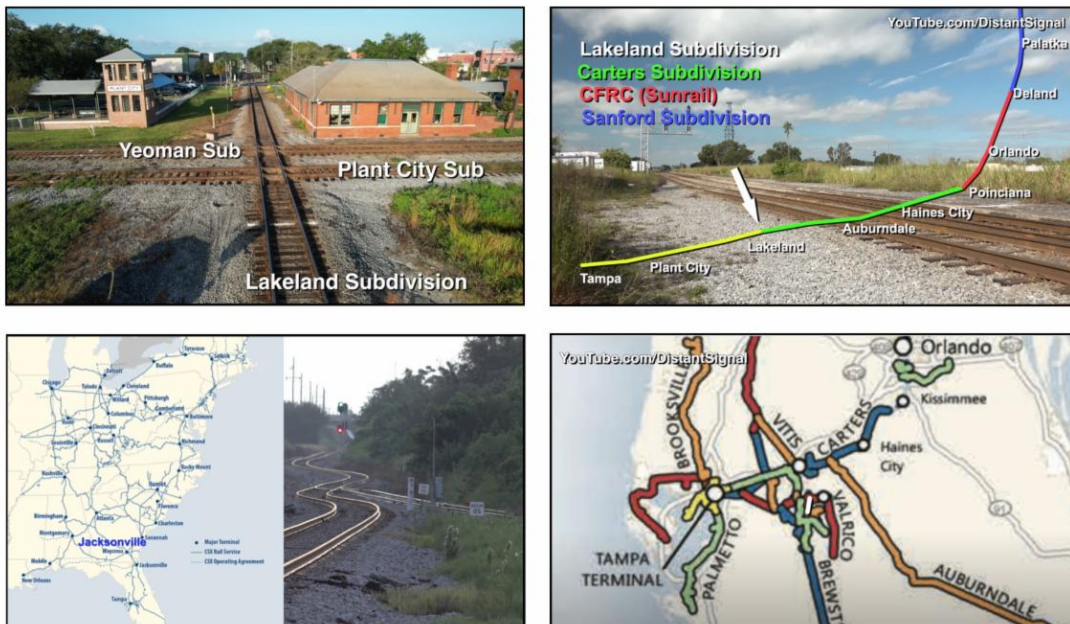




Women in the Model Railway Hobby

There's a growing number of women getting interested in model railways - but women in the hobby are still in the minority. Dawn wanted to find out what's stopping women getting more involved in railway modelling and she spoke to some amazing women in both the hobby and industry, including the executive director of the most famous model railroad museum in the US, and the woman behind Bachmann's fabulous LNER Thompson Teaks.

Railroad Divisions, Subdivisions & Junctions?



Railroad Divisions, Subdivisions & Junctions?

Danny Harmon made this video after receiving a question from a viewer asking what were Divisions and Subdivisions? He threw in Junctions because he has had a few questions about those as well.

Laying Track, Don't Make These Mistakes!

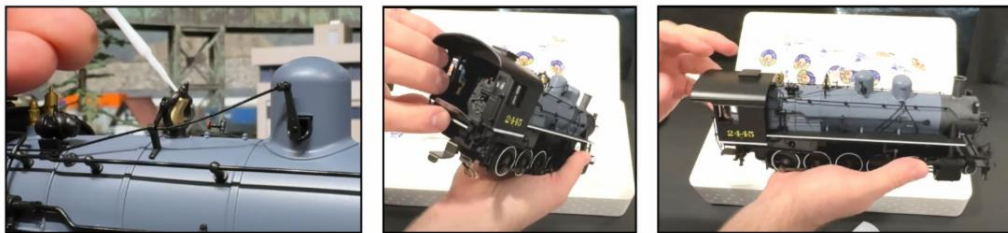




[Laying Track, Don't Make These Mistakes!](#)

Laying track may look like an easy, foolproof process but there are a few things that you can do to really screw it up! In this video Larry Puckett will give you an update on some trackwork he has recently done on his Piedmont Southern layout, and he will give you several tips to help you avoid some common mistakes.

Lionel's New Russian Decapod Review



[Lionel's New Russian Decapod Review](#)

Lionel's new Russian Decapod gets the job done! An Eric's Trains review of the new Lionel O 3-Rail model of a Russian Decapod steam locomotive.

Behind the Scenes Basement Tour



[Behind the Scenes Basement Tour](#)

This is a behind-the-scenes video tour of Ron Marsh's basement. Many have asked over time exactly how his layout fits into the general surroundings of his basement. In this video he gives you a full tour of the basement so you can see exactly where the layout fits into the space.

Controlling LEDs With DCC-EX





[Controlling LEDs With DCC-EX](#)

This video illustrates the use of DCC-EX (EX-Rail) to control LED's using PCA9685 modules. The video shows how to control LED's and signals with DCC-EX. Note that the examples given are just that, EXAMPLES. Your use may vary, and actual programming will likely be different.

Bizarre Trains—This is Pretty Wild Stuff

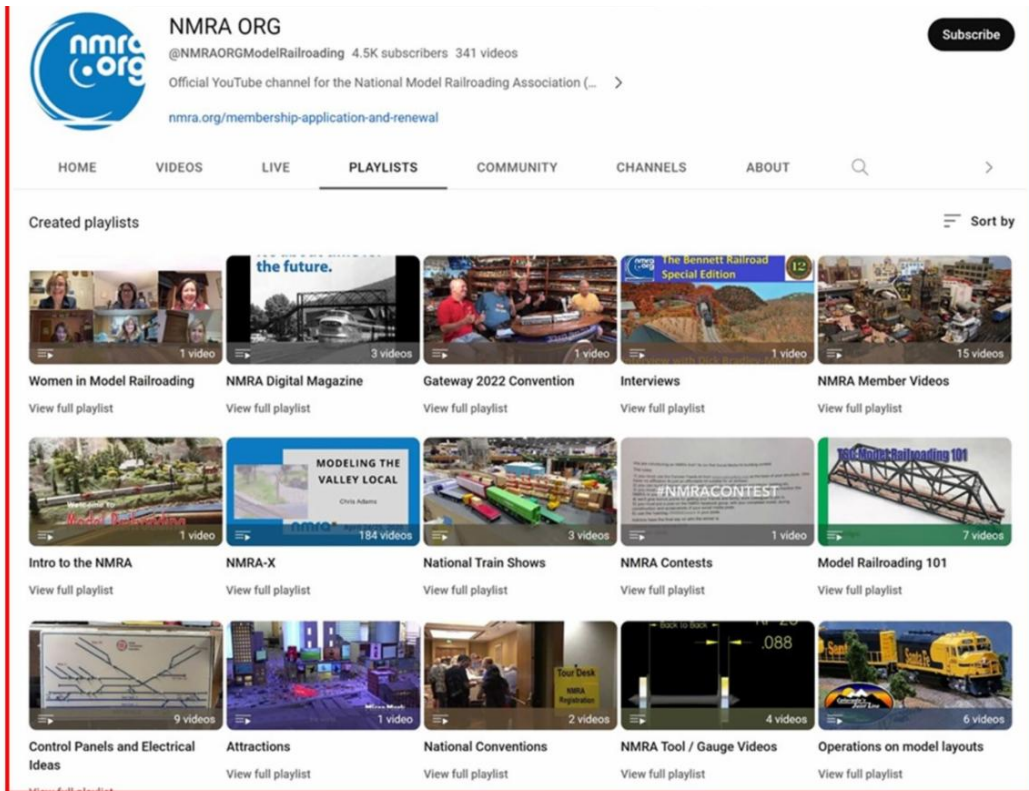


[Bizarre Trains—This is Pretty Wild Stuff](#)

These bizarre trains may not turn the heads of seasoned railroaders, but for the rest of us, this is pretty wild stuff!

NMRA-x YouTube Channel





[NMRA-x YouTube Channel](#)

Midwest Region Convention 2024

AROUND THE BEND

SAVE THE DATE

AROUND THE BEND
MIDWEST REGIONAL CONVENTION
MAY 2TH-4TH, 2024
The Century Center, South Bend, Indiana


Regional Train Event • Clinics • SIG Activities • Layout Tours
Operating Sessions • Display Room • NMRA AP Program Judging
Railroad and General Interest Tours • *And much more!*




Admission Prices This event is open to NMRA members and the general public

Early Bird Registration (ends April 1, 2024)			
Full Convention Registration	\$70 Public	\$60 NMRA	\$48 Volunteers
One-day Registration	\$40 Public	\$30 NMRA	\$24 Volunteers
Gate Registration (on or after April 2, 2024)			
Full Convention Registration	\$75 Public	\$65 NMRA	\$52 Volunteers
One-day Registration	\$45 Public	\$35 NMRA	\$28 Volunteers

Members of the public may pay for a Rail Pass Membership and receive NMRA admission prices.
Children 12 and under accompanied by an adult (paid) are admitted free.



VISIT
SOUTH
BEND

MISHAWAKA

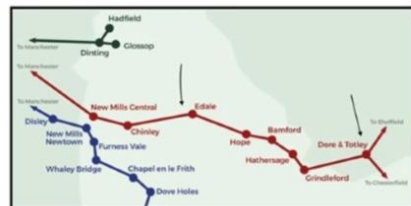
For more info visit
2024AROUNDTHEBEND.COM

[Midwest Region Convention Promo](#)

The above promotional video shows what will be available to see and

do at the upcoming Midwest Region Convention May 2nd through 4th, 2024. Their convention's website can be found [here](#).

The Railway That Defied Beeching



[The Railway That Defied Beeching](#)

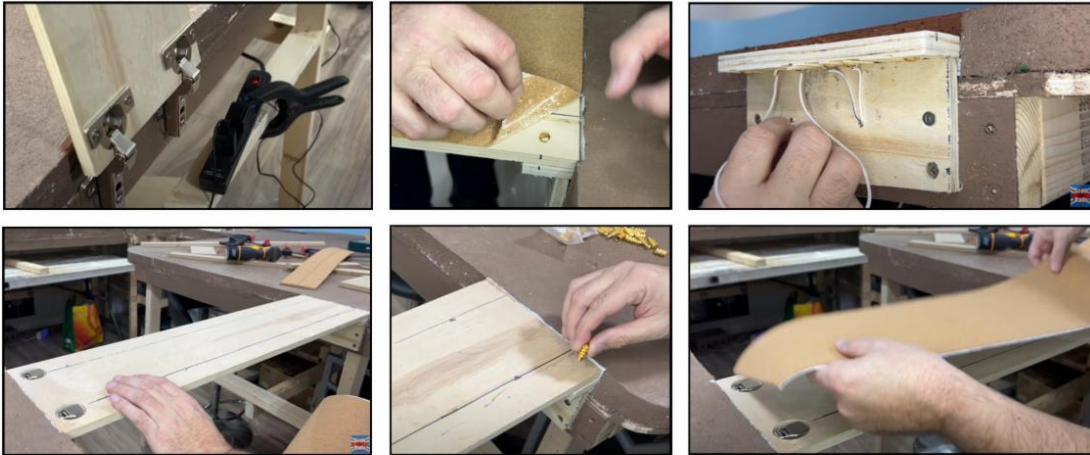
On 27 March 1963, Dr. Richard Beeching, a physicist and engineer who for a short but very notable time was chairman of British Railways, published his report entitled “The Reshaping of British Railways”. The report identified profitable and unprofitable services and revealed great unevenness in the use and effectiveness of railways. It recommended the widespread closure of uneconomical routes. This report delivered the biggest blow to the UK rail network with over 5,000 miles of rail, 3,000 stations and 67,000 job losses proposed.

By the 1970’s most of these proposals had been implemented with just a handful of survivors, mainly due to the furious protests that had ensued following the publication of Beeching’s report.

This presentation takes a look at one such survivor, the stunning Hope Valley Line, and takes a look at its contribution to Derbyshire’s

community. Deemed a failure by Beeching it was earmarked for the complete removal of its passenger services. This was overturned on appeal. Not only did it survive, but it has also gone on to thrive, with passenger numbers climbing year upon year, leading to a £140 million pound capacity upgrade which will be completed by spring of this year.

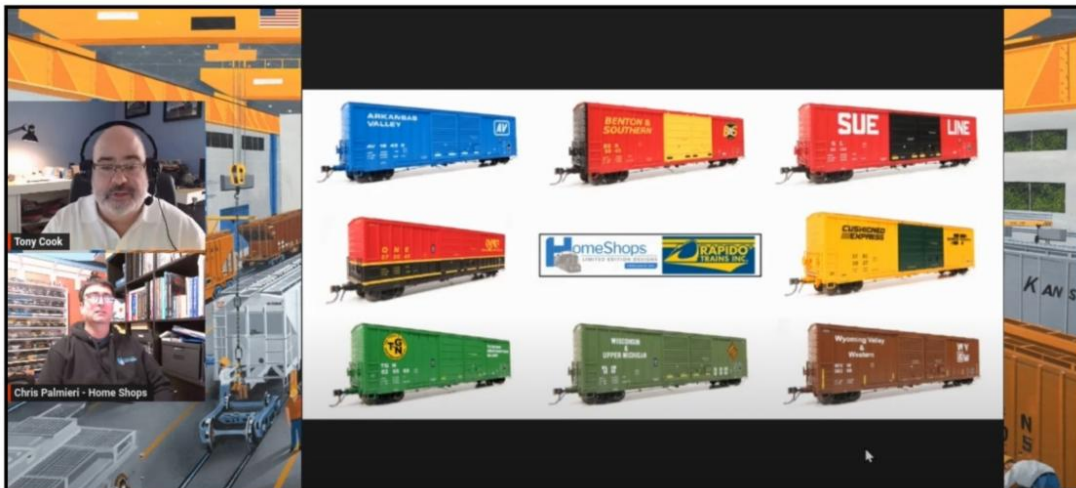
Hidden Hinge & Hidden Power Lift Bridge



Hidden Hinge & Hidden Power Lift Bridge

This is *ScottRails'* new and improved Hinged Lift bridge.

Home Shops PC&F 5258 Boxcars



Home Shops PC&F 5258 Boxcars

A visit with Home Shops Chris Palmieri and a look at his Rapido Trains-made HO-scale PC&F 5258 boxcars and information on the freelance model railroads represented.

SouthEastern Region Convention 2024



SER-NMRA Annual Convention
June 20 to June 24

Decatur DoubleTree is offering a Special Group Rate of \$115/night.

LAST DAYS: JUNE 3rd to BOOK the special rate of \$115/night!
MAY 1st to REGISTER at the EARLY \$65 price!
(\$75 after May 1st)

Join Us In Beautiful Decatur, Alabama for River Rails 2024

The Mid-South division invites you to join us in Decatur to enjoy the clinic, model, prototype, and non-rail activities at the Southeastern Regional Convention.



OUR HOST
DOUBLE TREE
BY HILTON

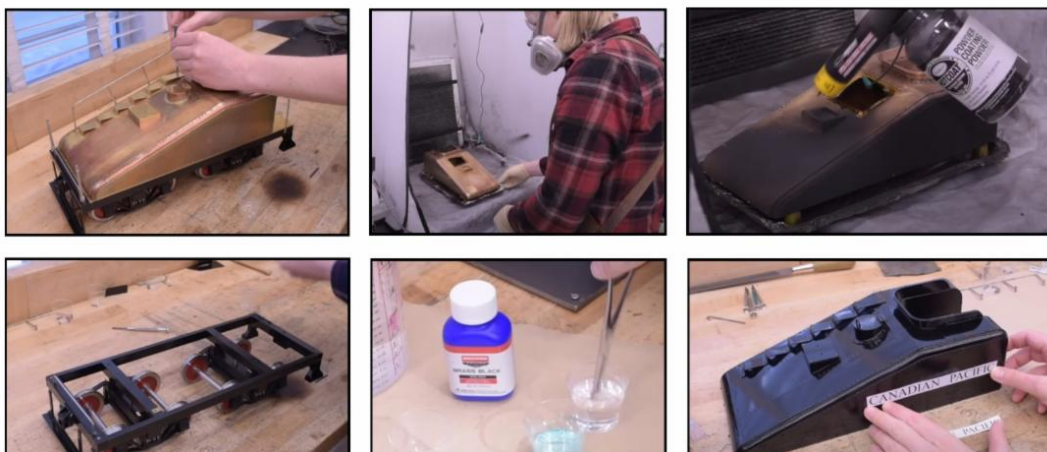
DoubleTree by Hilton Hotel
Decatur Riverfront
1101 6th Ave NE
Decatur, AL 35601
(256) 355-3150

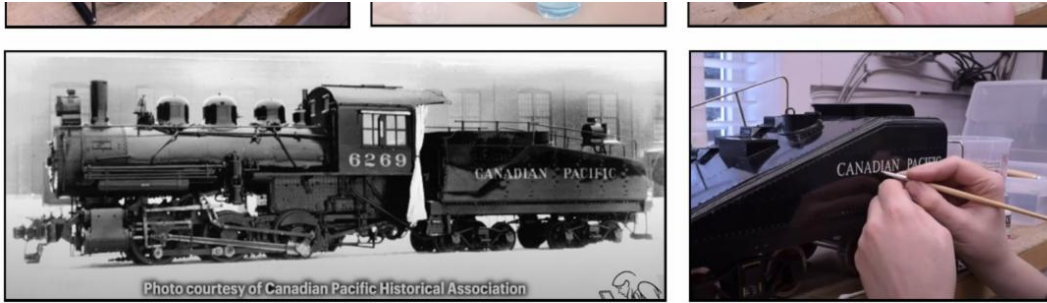


[SouthEastern Region Convention](#)

In addition to the convention's website, you can watch a short convention [promo video](#) on what will be happening at the upcoming River Rails 2024 SER Convention! Click on the graphic above to go to their convention's website.

Powder Coating & Lettering





[Powder Coating & Lettering](#)

Quinn Dunkl is building Kozo Hiraoka's Pennsylvania A3 Switcher in 3.5" gauge (1:16 scale). Live steam fun that will pull an adult around a real track! Follow along with his book, linked in every video.

In this episode of *Blondihacks*, Quinn is powder-coating the tender on her switcher build! (Part 30)

Local Switching on a BNSF Layout



[Local Switching on a BNSF Layout](#)

Tag along with the crew of a BNSF local to switch out a lumber yard. Dodge other freight trains while making your way through yard tracks and treacherous grades. This HO scale layout has much to

offer.

Vinyl Banner Backgrounds



[Vinyl Banner Backgrounds](#)

After a period of time, the background mountains were finally printed on a vinyl banner at Walgreens. It was easy enough and only cost \$15 for the entire new section of the layout.

SurfLiner 2024 - NMRA National Convention

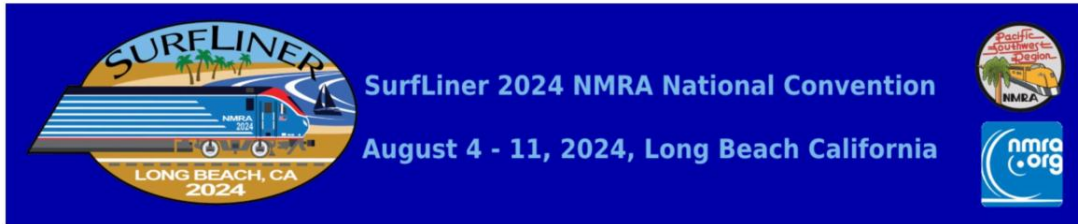


[SurfLiner 2024 in Long Beach, CA](#)

A great convention needs an amazing location, and our hotel is the Westin Long Beach in downtown Long Beach. The Westin Long Beach is just two blocks from the beach, harbor, and pier. Directly

across the street is the Center for Performing Arts and the Long Beach Convention & Entertainment Center.

SurfLiner 2024 - NMRA National Convention



SurfLiner 2024 Promotional Video

NMRA's Partnership Program



PARTNERSHIP PROGRAM

NMRA members can log in and click on the **Benefits** tab to view the **NMRA Partnership Program**. Please patronize all of our partners for some fantastic discounts as an NMRA member!

Bespoke Rail	Hot Wire Foam Factory	R & J Details
CatzPaw Innovations	ITLA Scale Models	Scale Model Plans
CB Train Junction	K.I.S.S Method, Inc.	Scale Railroad Models
Clever Models, LLC	LaBelle Woodworking Co.	Scenery Solutions
Coastmans Scenic Products	LARC Products	Showcase Miniatures
Composite Designs, Inc.	Logic Rail Technologies	T-Trak by Denniston*
CMR Products, LLC	MAC Rail	Team Track Models
Conowingo Models	Micro-Mark	The N Scale Architech
Cowcatcher Magazine	Mine Mount Models	The Old Depot Gallery
Daylight Sales (Merchandise)	Miniprints	Tichy Train Group
Deepwoods Software	MrTrain.com*	Touch of the Brush Model
Deluxe Materials	MRC (Model Rectifier Corp)	Weathering
Diorama Hobbies	Model Train Catalogue	Train Installations, LLC
Dwarvin Enterprises, Ltd	Modelers Decals & Paint	Train Show, Inc.
East Coast Circuits	Motrak Models	Trainmasters TV/Model
Enterprise and National Car	Mudd Creek Models	Railroad Hobbyist Store
Rental Services	New Creations Victorian	TRAINZ.com
Evan Designs	Railroad Buildings	TSG Multimedia
Feight Studios	Nick and Nora Designs	UGEARS
Fusion Scale Graphics	Northlandz	USA Airbrush Supply/
Gatorfoam	NScale Works by Mike Holly	Badger Airbrush
Great Decals!	Old Depot Gallery	WiFi Model Railroad, LLC
Green Frog Productions	Old West Scenery	Yelton Models
Highways and Byways Model	RAM Track	
Railroad Graphics	RR-CirKits	

[New Partners in **RED***]

March 2024

Partnership Program

The NMRA Partnership Program is a member benefit that truly has a tangible payback. We've partnered with model railroad manufacturers of all sizes, giving them exposure on our website in return for receiving generous discounts for NMRA members all year long. Some provide members with special codes, others prefer a phone or email

order, but all appreciate the additional business from our members. And of course, our members appreciate the extra savings...savings that can actually pay the cost of NMRA membership!

Also, be sure to check back often as new Partners are being added all the time!

Our two new Partners this month:

New Partner - T-Trak by Denniston



The National Model Railroad Association is excited to announce T-TRAK by Denniston as our newest NMRA Partner!

15% OFF FOR NMRA MEMBERS

 national model railroad association

Visit our website www.nmra.org/partnerships

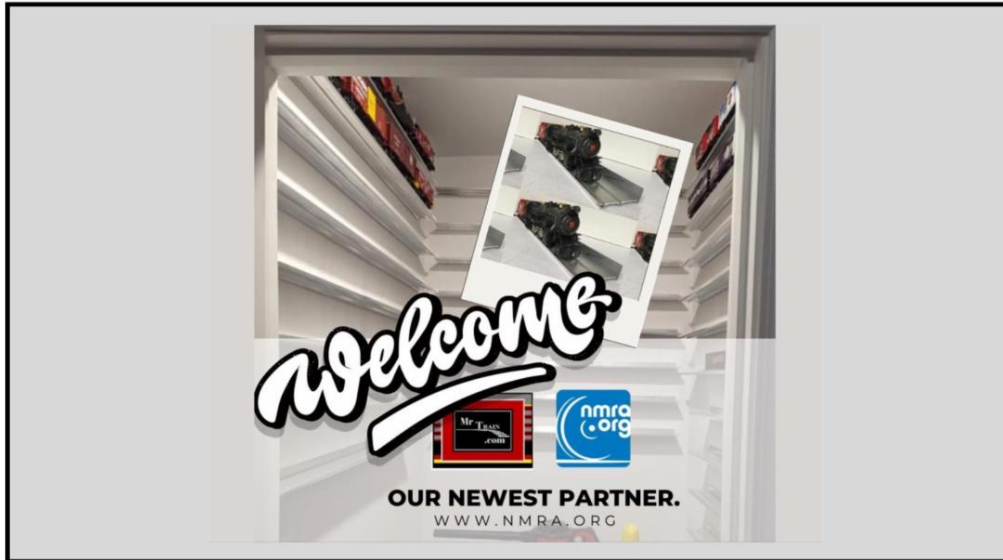
New Partner - T-Trak by Denniston

Based in Northwest Florida, Stuart Denniston is providing fully assembled, standard and custom T-TRAK modules since 2021, offering a fantastic alternative to T-TRAK module kits. With over 35 years of cabinetmaking experience, Stuart specializes in creating high-quality modules for all your model railroad needs. Whether you're a beginner or a seasoned hobbyist, T-TRAK by Denniston has the perfect solution for you!

Stuart's commitment to exceptional craftsmanship and attention to detail shines through in his custom modules, including balloon loop modules, extra depth modules, and more. Plus, he now offers Kato to Anderson PowerPole/Anderson PowerPole to Kato assemblies and bus cable assemblies to enhance your setup.

NMRA members, rejoice! Enjoy a special 15% discount on T-TRAK by Denniston products. Simply log in to your NMRA account to receive the discount code. Reach out to Stuart at dennind@gmail.com to explore his offerings and elevate your model railroad experience. Stay tuned for his upcoming website in 2024!

New Partner - MrTrain.com



[New Partner - MrTrain.com](http://www.MrTrain.com)

With 24 years of experience in crafting items for the model railroad, toy train, and miniature world hobby enthusiast, Mrtrain.com takes pride in producing their products right here in the USA, in western Pennsylvania.

Owner Alan's passion for model trains spans over 51 years and led him to transform his hobby into a successful business. Starting with the simple desire to showcase his impressive collection, Alan designed an innovative aluminum display shelving system that could effortlessly hold even the heaviest locomotives without the need for support brackets. Recognizing the demand for such quality products within the hobby, MrTrain.com was born.

As a special offer for NMRA members, get an exclusive deal when you purchase a 5-pack of train display shelves on MrTrain.com – receive an additional shelf for free! To access the promo code, simply log into your member area at www.nmra.org and elevate your model train display today!

NMRA@HOME



Railfanning a B&O HO Empire

Featured in the Division Business Car Column appearing in the April 2024 issue of NMRA Magazine.

The Cincinnati Division of the Mid Central Region published a layout tour of John Listermann's B&O Fairmont Division in its newsletter, *The Oil Can*. John's club-sized layout depicts the railroad as it would look during the steam to diesel transition era.

Rob Sprague's Ma & Pa

Featured in the *Division Business Car Column* appearing in the February 2024 issue of NMRA Magazine.



Take a tour of Bob Sprague's Maryland & Pacific, affectionately called the Ma & Pa. Bob wrote about his layout for *The Potomac Flyer*, the newsletter of the Mid-Eastern Region's Potomac Division.



The Last Zebra Gets DCC

Featured in the *Division Business Car Column* appearing in the February 2024 issue of NMRA Magazine.

Kelly Russell, a member of the 100% NMRA San Jacinto Model Railroad Club in Houston Texas, wraps up his series on installing DCC into his Santa Fe zebra-striped engines in the club's newsletter, *The Derail*, in Part 5. You can find Parts 1 through 4 below.

Organize Your Shop!

Featured in the *Division Business Car Column* appearing in the February 2024 issue of NMRA Magazine.

If you ever want to see your workbench again, the answer is to organize your workshop. Bruce Bowie, a member of Division 4 of the Mid Central Region provides suggestions in the division's newsletter, *The Flatwheel*.



Building Switch Lists

Featured in the *Division Business Car Column* appearing in the April 2024 issue of NMRA Magazine.

David Paul, a member of the 100% NMRA San Jacinto Model Railroad Club of Houston Texas, explains how he uses Microsoft Excel to create his switch lists in the January issue of the club's newsletter, *The Derail*.

Building a Craftsman Kit, Part 2

Featured in the *Division Business Car Column* appearing in the April 2024 issue of NMRA Magazine.

Jack Ellis of Bar Mills continues to share his techniques on building craftsman kits in the Niagara Frontier Region's Western New York Division newsletter, *The Lantern*. In this issue, Jack shares tips on painting, detailing and weathering, stucco, brick, and stone structure walls. You can find Part 1 below.



The ***Division Business Car*** column appears in even-numbered months in NMRA Magazine. It's loaded with great modeling ideas, plus useful information that can help make your Division, Region, or 100% NMRA Club even better. The information comes from articles published in Region, Division, and Club newsletters. The best of these articles are posted on the NMRA website. You can read the entire archive, from as far back as 2011 right up to the latest posting, by clicking [here](#).

Previous issues of the ***NMRA Turntable*** are available on the Turntable Archives page. You must first log in as a member at: nmra.org After you are in the members-only section, then you must hover over 'Publications' on the menu bar, then 'NMRA Turntable', and then click on one of the list of back issues.

Editor: [Paul Voelker, HLM](#)

Executive Editor: [Rick Coble](#)

The NMRA Turntable is an official monthly production of the National Model Railroad Association, Inc. Publishing Department ([Riley Triggs](#) Manager). Its purpose is to introduce NMRA members to a selection of instructional videos and online publications that they may find of interest. If you know of an NMRA member who is not receiving this mailing, please direct them to [here](#) to update their email address. If you no longer wish to receive these mailings, please don't mark them as SPAM. Instead, click the Safe Unsubscribe link at the bottom of this page. ©2021 National Model Railroad Association, Inc., P.O. Box 1328, Soddy Daisy TN 37384.